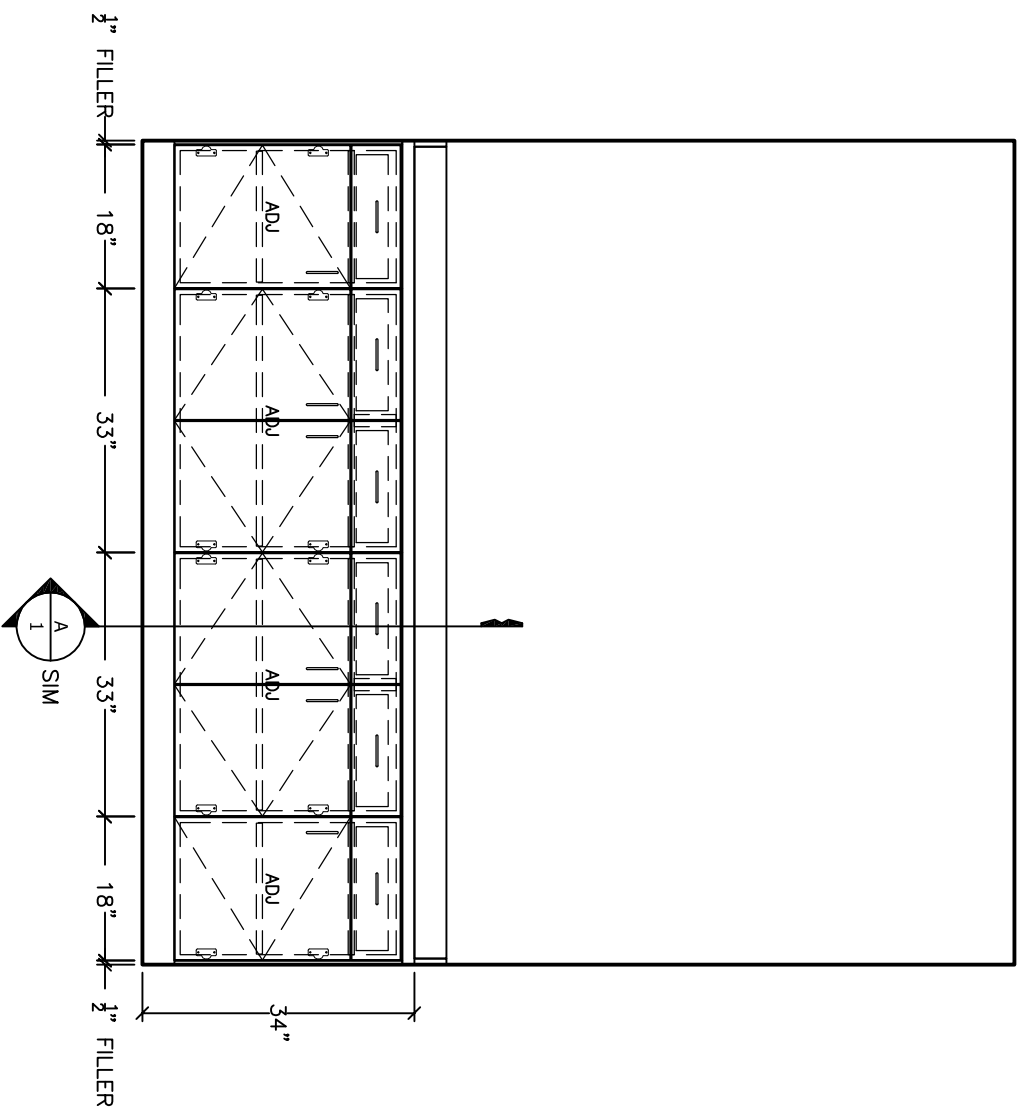
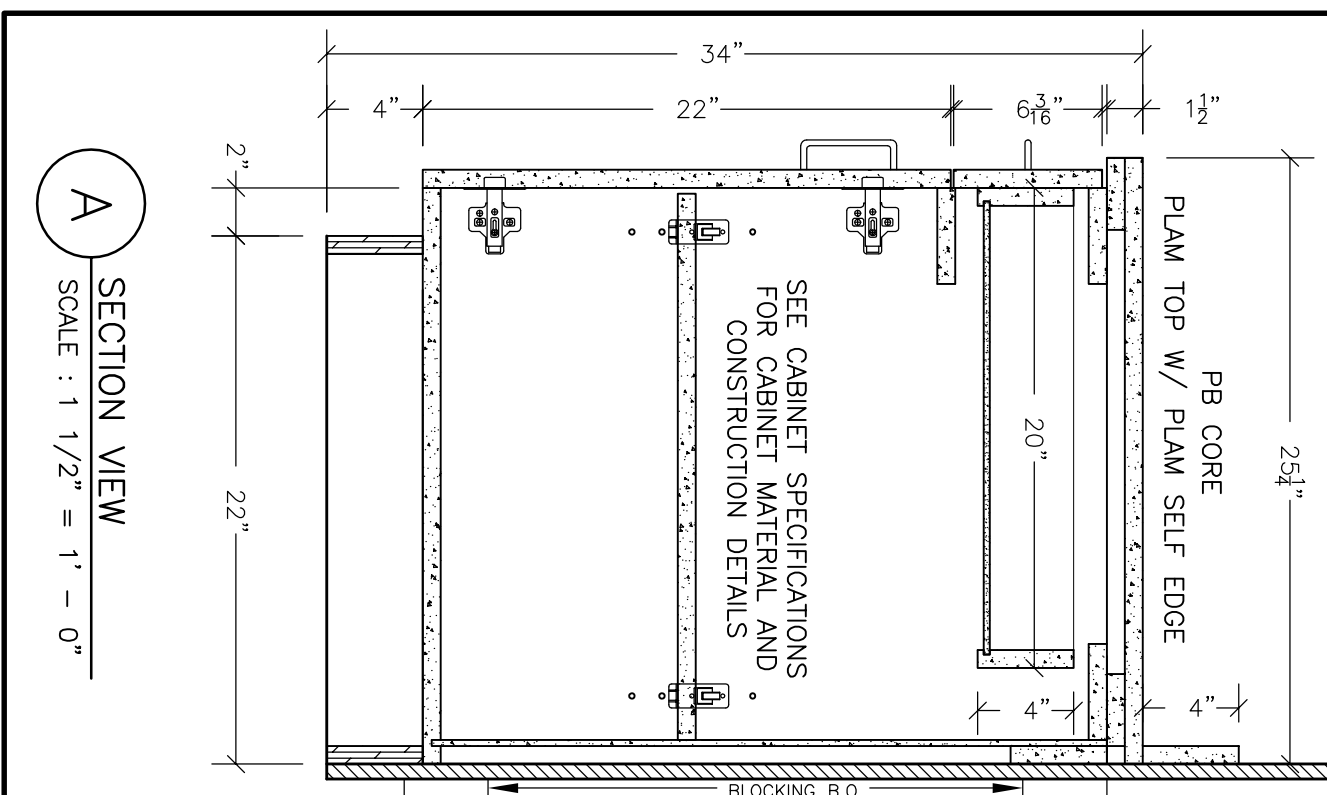
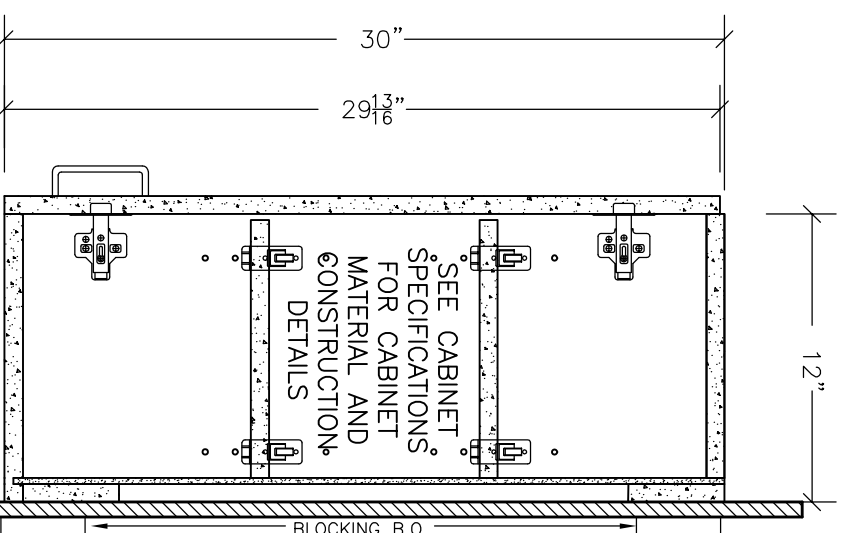


3

Mail/Copy/Server 114

CW#

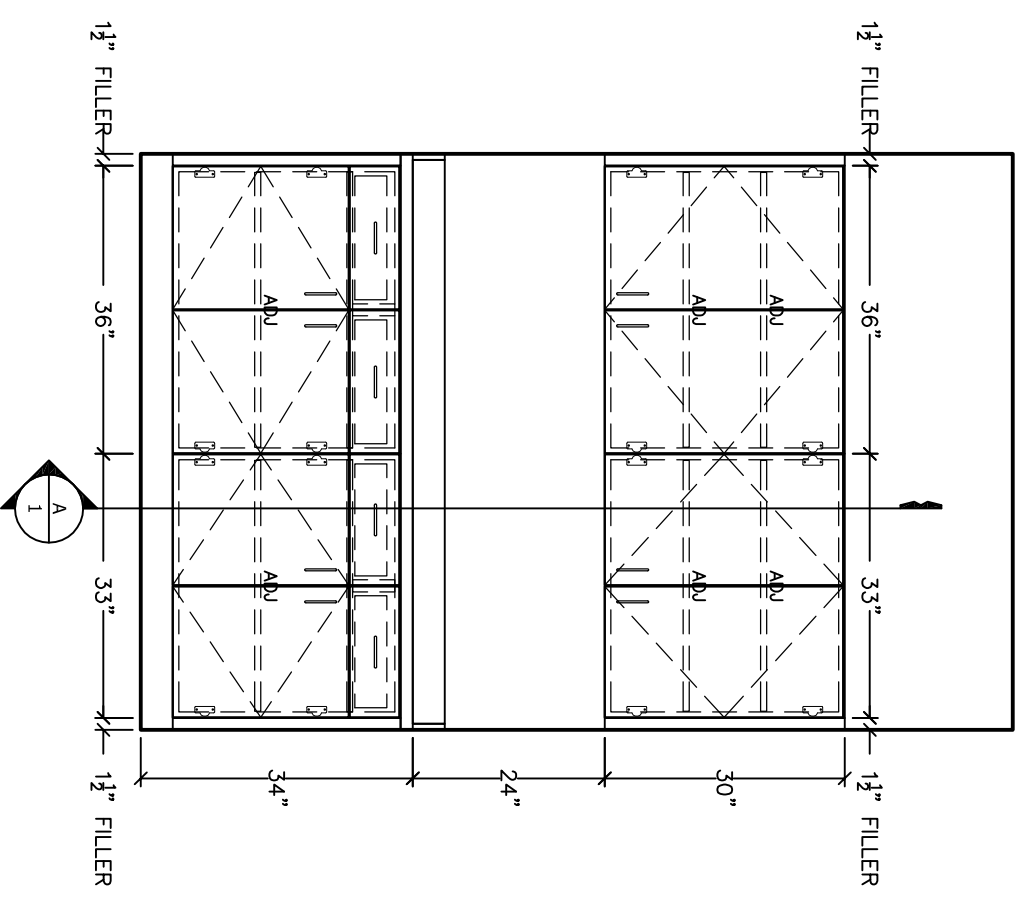
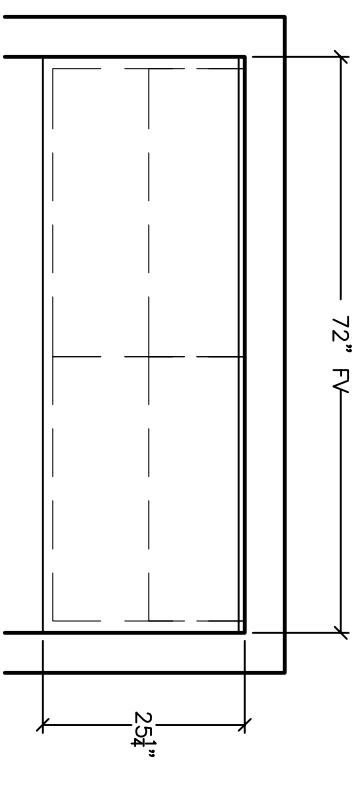
COUNTER TOP & CABINET FINISHES											
ITEM	COUNTER TOP	EXTERIOR	INTERIOR	SHELVES	DOOR EDGE	DRAWER EDGE	CABINET STYLE	N/A	HARDWARE	HINGES & PULLS	N/A
SURFACE FINISH	TOP P12	EDGE P12	SPRAYS P12	INTERIOR P11	N/A	N/A	N/A	N/A	N/A	N/A	N/A
FINISH	P12	P12	P12	N/A	N/A	N/A	N/A	N/A	N/A	N/A	N/A



1 Multi-Purpose 105

CW#

COUNTER TOP & CABINET FINISHES											
ITEM	COUNTER TOP	EXTERIOR	INTERIOR	SHELVES	DOOR EDGE	DRAWER EDGE	CABINET STYLE	N/A	HARDWARE	HINGES & PULLS	N/A
SURFACE FINISH	TOP P12	EDGE P12	SPRAYS P12	INTERIOR P11	N/A	N/A	N/A	N/A	N/A	N/A	N/A
FINISH	P12	P12	P12	N/A	N/A	N/A	N/A	N/A	N/A	N/A	N/A



2 Meeting 119

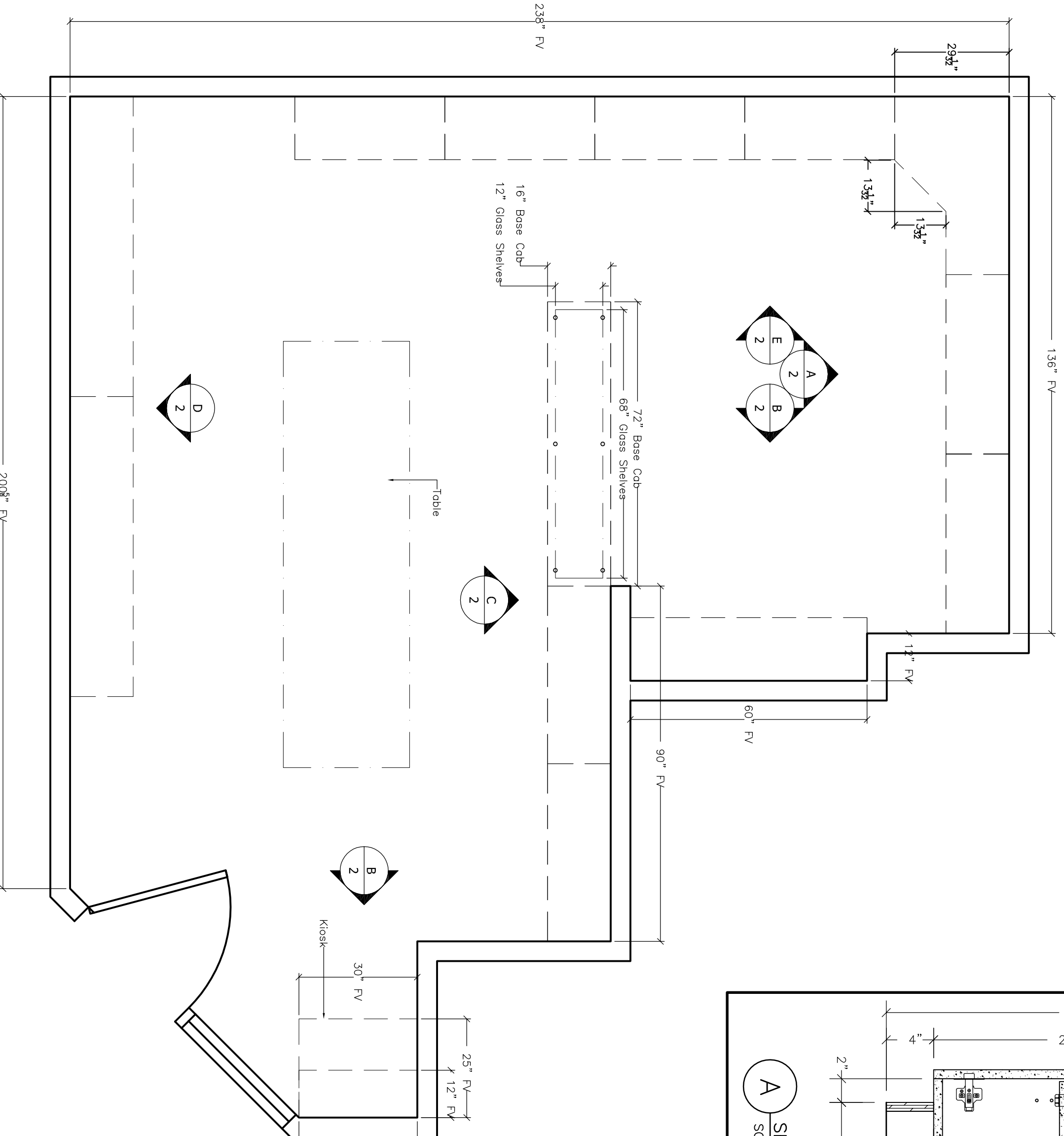
CW#

COUNTER TOP & CABINET FINISHES											
ITEM	COUNTER TOP	EXTERIOR	INTERIOR	SHELVES	DOOR EDGE	DRAWER EDGE	CABINET STYLE	N/A	HARDWARE	HINGES & PULLS	N/A
SURFACE FINISH	TOP P12	EDGE P12	SPRAYS P12	INTERIOR P11	N/A	N/A	N/A	N/A	N/A	N/A	N/A
FINISH	P12	P12	P12	N/A	N/A	N/A	N/A	N/A	N/A	N/A	N/A

4 Museum 103

CW#

COUNTER TOP & CABINET FINISHES											
ITEM	COUNTER TOP	EXTERIOR	INTERIOR	SHELVES	DOOR EDGE	DRAWER EDGE	CABINET STYLE	N/A	HARDWARE	HINGES & PULLS	N/A
SURFACE FINISH	TOP P12	EDGE P12	SPRAYS P12	INTERIOR P11	N/A	N/A	N/A	N/A	N/A	N/A	N/A
FINISH	P12	P12	P12	N/A	N/A	N/A	N/A	N/A	N/A	N/A	N/A



SITE MAP

MT-200 CABINET SPECIFICATIONS

**CARCASS CONSTRUCTION:** 3/4" PARTICLEBOARD WITH VHS HIGH PRESSURE PLASTIC LAMINATE EXTERIOR SURFACES & THERMOSET COVERED PARTICLEBOARD INTERIOR SURFACES.

**BASE CABINETS:** SIDES, RAILS & BOTTOMS TO BE 3/4" THERMOSET COVERED PARTICLEBOARD. GLED & DOWELED. BACK PANELS TO BE 1/4" THERMOSET COVERED MDF INSET INTO DADO WITH STAPLES AND HOTMELT SEALER ON SIDES AND BOTTOM. 3/4" NAILER ON TOP CONCEALED BEHIND BACK PANEL. EXTERIOR EXPOSED EDGES OF CABINET TO BE 3/4" EXTERIOR GRADE PLYWOOD WITH CENTER SUPPORTS AND SHIPPED LOOSE).

**WALL CABINETS:** SIDES TOP & BOTTOM TO BE 3/4" THERMOSET COVERED PARTICLEBOARD. GLED & DOWELED. BACK PANELS TO BE 1/4" THERMOSET COVERED MDF INSET INTO DADO WITH STAPLES & HOTMELT SEALER SIDES AND BOTTOM. 3/4" NAILERS ON TOP AND BOTTOM CONCEALED BEHIND BACK PANEL. EXTERIOR EXPOSED EDGES OF CABINET (DRAWERS) TO BE EDGED WITH MATCHING PLASTIC LAMINATE.

**ADJUSTABLE SHELVES:** SHELVES TO BE 3/4" THERMOSET COVERED PARTICLEBOARD. SHELVES TO BE MOUNTED ON SHELF CLIPS INSERTED IN HOLES IN CABINET SIDES 32MM O.C. FRONT EDGE OF SHELF TO HAVE 1MM PVC MATCHING EDGE TAPE.

**DOOR AND DRAWER FRONTS:** FLUSH OVERLAY CONSTRUCTION WITH VHS HIGH PRESSURE LAMINATE ON EXTERIOR FACE. INTERIOR SURFACE TO BE THERMOSET COVERED PARTICLEBOARD. EDGES SEE FINISH SCHEDULE.

**DRAWER BOX SIDES, FRONT & BACK TO BE 3/4" THERMOSET COVERED PARTICLEBOARD. DRAWER BOTTOM TO BE 1/4" THERMOSET COVERED MDF. BOTTOM TO BE SET INTO DADO ON FOUR SIDES WITH HOT MELT ADHESIVE ON BOTTOM.**

**Hinges :** FULLY CONCEALED 120° SNAP ON WITH FULL ADJUSTMENTS.

**DRAWER SLIDES :** 75 LB. CAPACITY WHITE EPOXY COATED WITH NYLON ROLLERS 3/4" EXTENSION. 4" WIRE PULLS IN DULL CHROME FINISH.

PLAM COUNTERTOP SPECIFICATION

3/4" PARTICLE BOARD WITH HGS HIGH PRESSURE PLASTIC LAMINATE EXTERIOR SURFACES. BUILDUP ON FRONT OF COUNTERTOP TO BE 1 1/2" UNLESS OTHERWISE SPECIFIED. BACK AND SIDE SPLASHES TO BE MADE OF 3/4" PARTICLE BOARD UNLESS OTHERWISE SPECIFIED. W/HGS HIGH PRESSURE PLASTIC LAMINATE ON ALL EXPOSED SURFACES. SEE DETAILS FOR BACK SPLASH HEIGHT. OF 3/4" PARTICLE BOARD WITH HGS HIGH PRESSURE PLASTIC LAMINATE ON ALL EXPOSED AREAS AND FRAME TO BE MADE OF 2 LAYERS OF 3/4" SHOP GRADE PLYWOOD FOR SUPPORT.

ITEM	QTY	DESCRIPTION	MANUFACTURER	SUPPLIER	ITEM#	NOTES
1		PLAM	Benson	Baw	Z2133252C	
2		0.1MM Self-Adhesive	Sticor		UB8AR0401FL	
3		120 Degree Sealant	Sticor		UB829948	
4		120 Degree Sealant	Sticor		UB829948	
5		Clear Plastic Seal Film	Campana Hardware		DS8520304	
6		4" Dull Chrome Wire Pull	Campana Hardware		SUP93055C1	
7		Ball Dowel Assembly	Synmark		Model #61027	Natural Anodized Finish
8		Shelf Bracket	Synmark		Model #611100	All Natural Anodized
9		Shelf Bracket	Revere		TS112	Billington (Shain Dco)
10		Shelf Bracket	Revere		TS114	Billington (Shain Dco)
11		Shelf Bracket	Revere		7014	Billington (Shain Dco)
12		1.5mm Dada Drawer System	Nova Display		C44	Billington (Shain Dco)
13		Glass Sliding Filing Support	Nova Display		CO36	
14		Decorative Steel Shaker #471	Reichau		4671#6080C	
15			Reichau		4671#6080C	8 in (201.32) opening in (201.32) cut (Shounard Metal
16						
17						
18						
19						
20						
21						
22						
23						
24						
25						
26						
27						
28						

HARDWARE

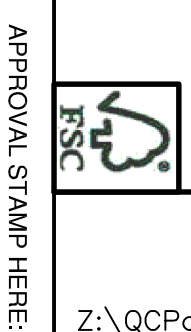
ITEM	QTY	DESCRIPTION	MANUFACTURER	SUPPLIER	ITEM#	NOTES
1		PLAM	Benson	Baw	Z2133252C	
2		0.1MM Self-Adhesive	Sticor		UB8AR0401FL	
3		120 Degree Sealant	Sticor		UB829948	
4		120 Degree Sealant	Sticor		UB829948	
5		Clear Plastic Seal Film	Campana Hardware		DS8520304	
6		4" Dull Chrome Wire Pull	Campana Hardware		SUP93055C1	
7		Ball Dowel Assembly	Synmark		Model #61027	Natural Anodized Finish
8		Shelf Bracket	Synmark		Model #611100	All Natural Anodized
9		Shelf Bracket	Revere		TS112	Billington (Shain Dco)
10		Shelf Bracket	Revere		TS114	Billington (Shain Dco)
11		Shelf Bracket	Revere		7014	Billington (Shain Dco)
12		1.5mm Dada Drawer System	Nova Display		C44	Billington (Shain Dco)
13		Glass Sliding Filing Support	Nova Display		CO36	
14		Decorative Steel Shaker #471	Reichau		4671#6080C	
15			Reichau		4671#6080C	8 in (201.32) opening in (201.32) cut (Shounard Metal
16						
17						
18						
19						
20						
21						
22						
23						
24						
25						
26						
27						
28						

Plan, Elev and Spec

Ohio Pharmacist Association

2674 Federated Blvd, Columbus, Oh  
CITY AND STATE

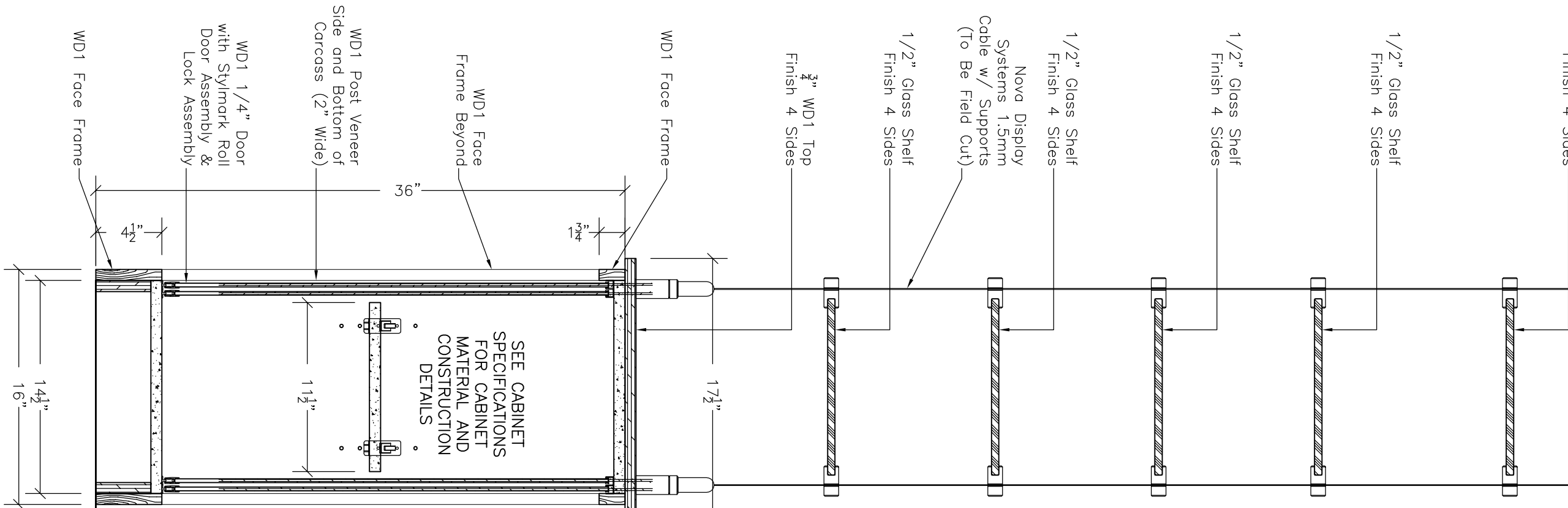
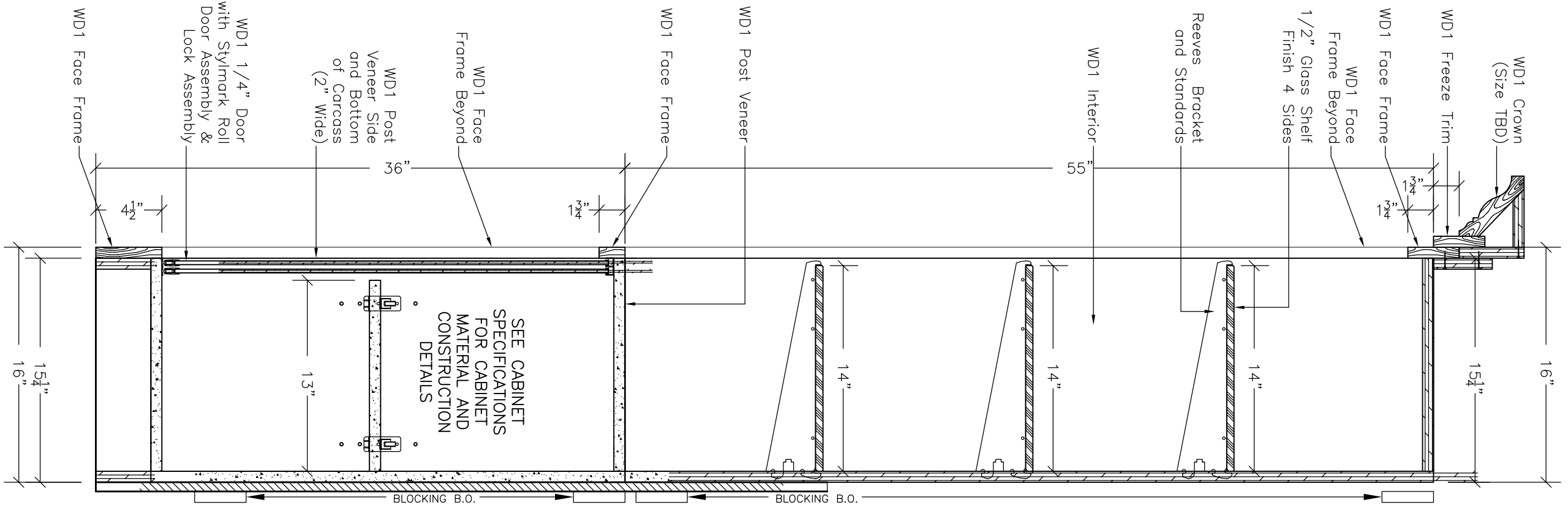
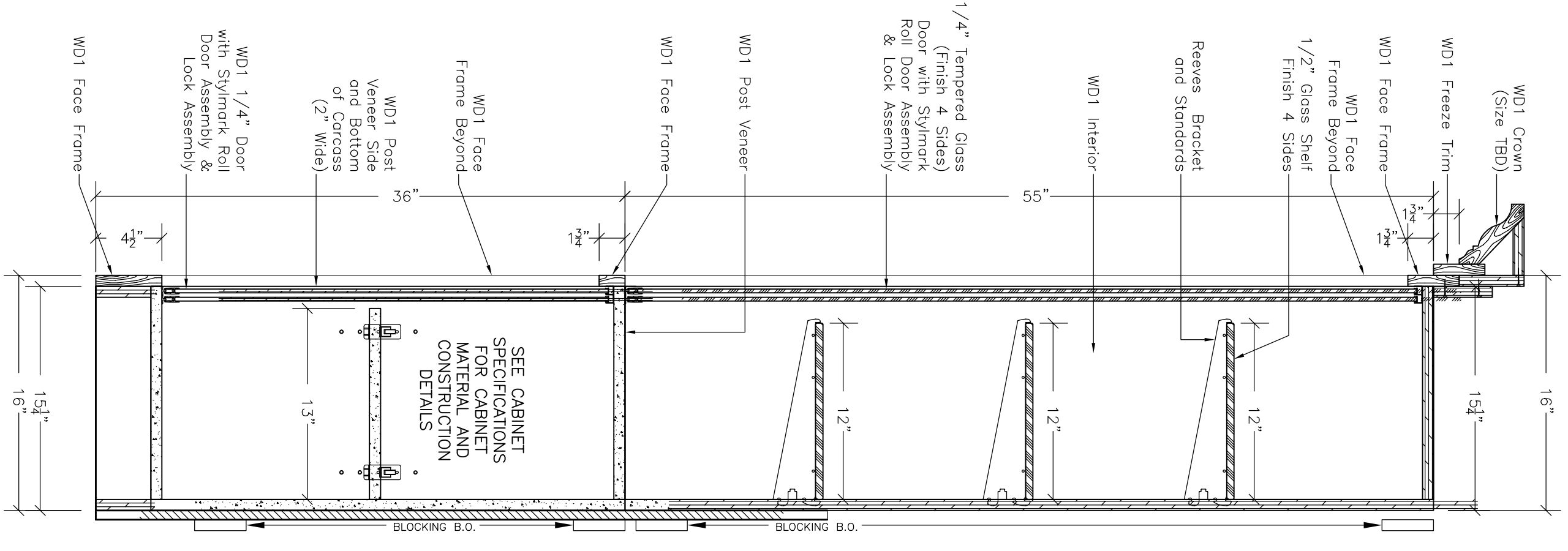
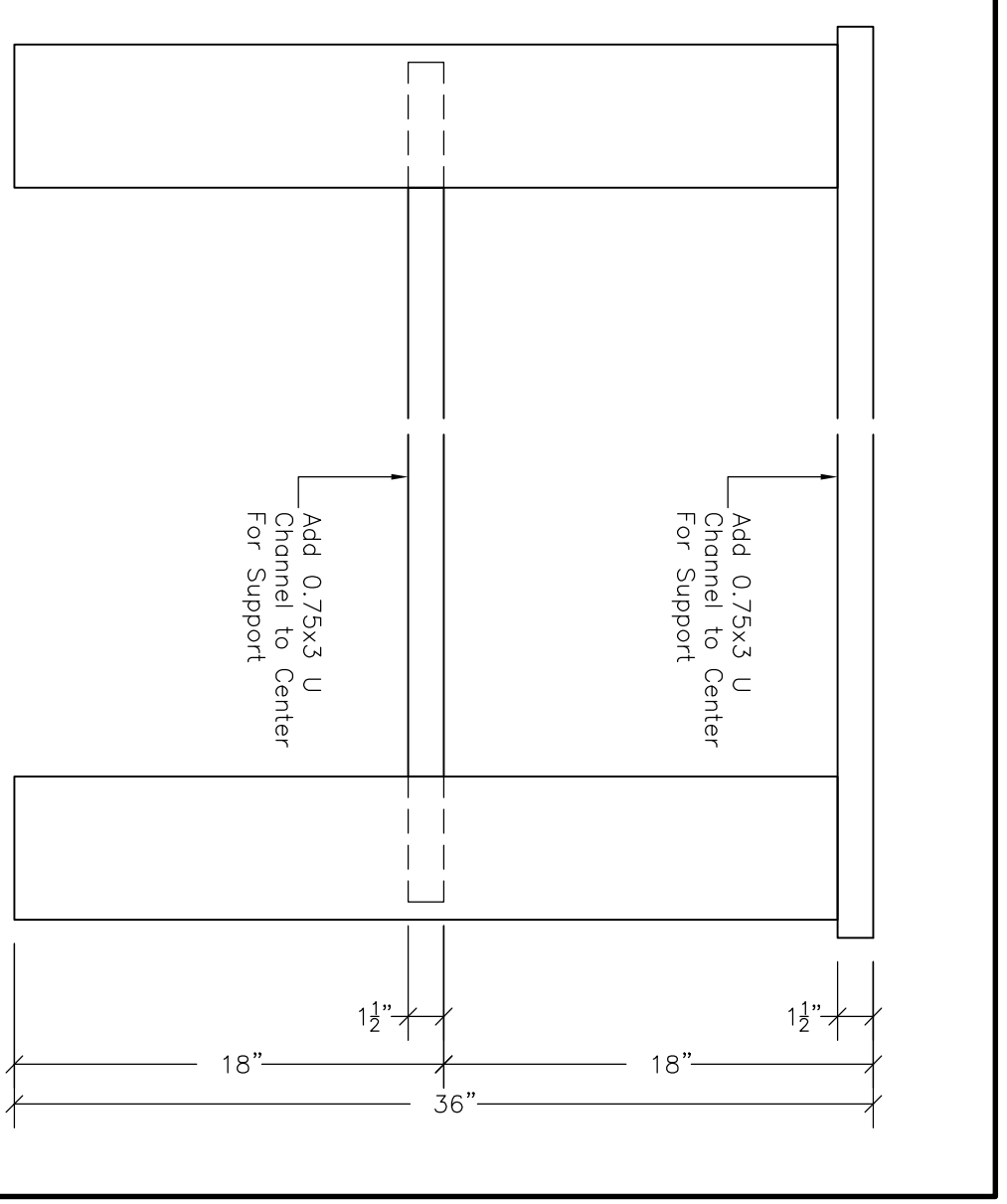
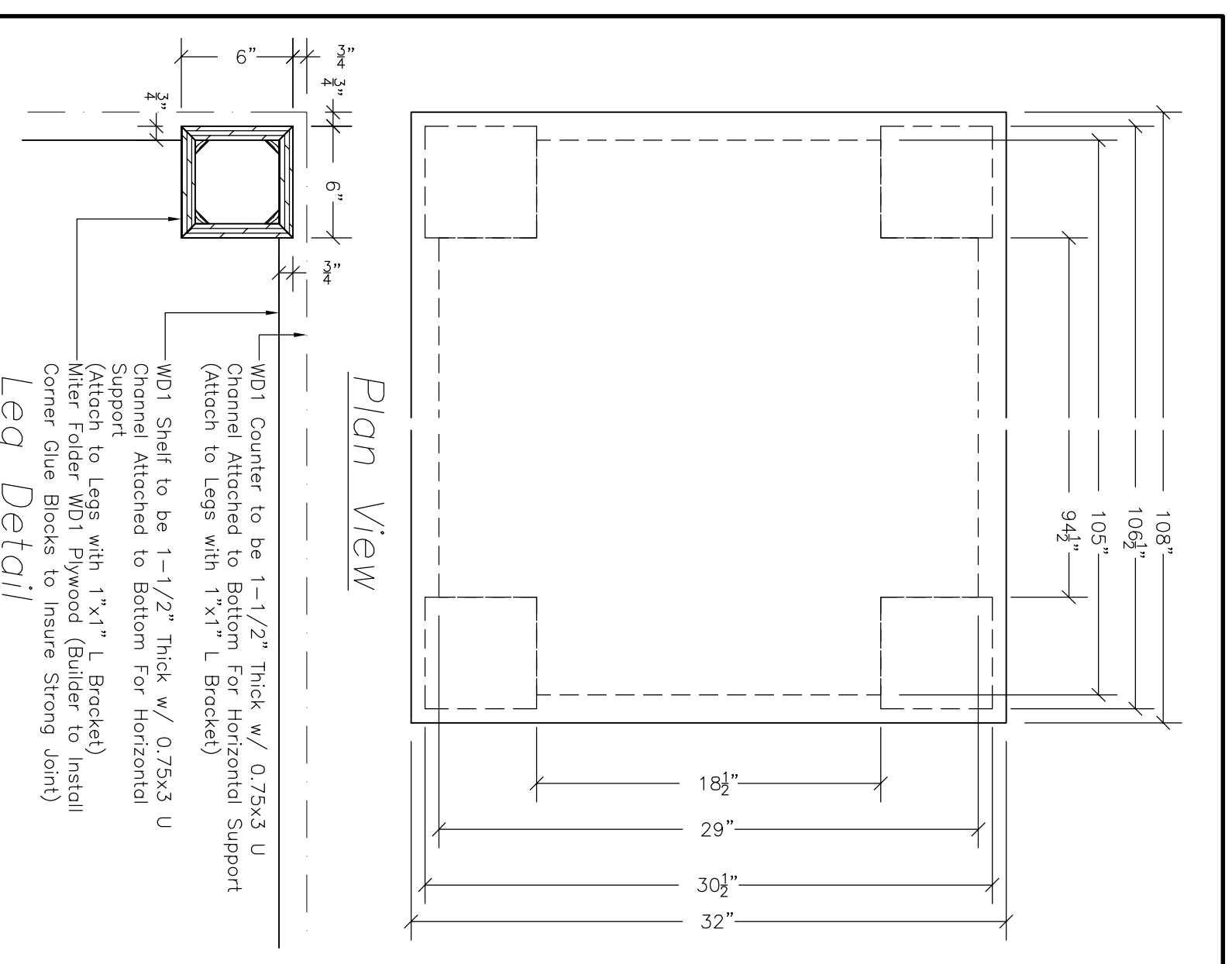
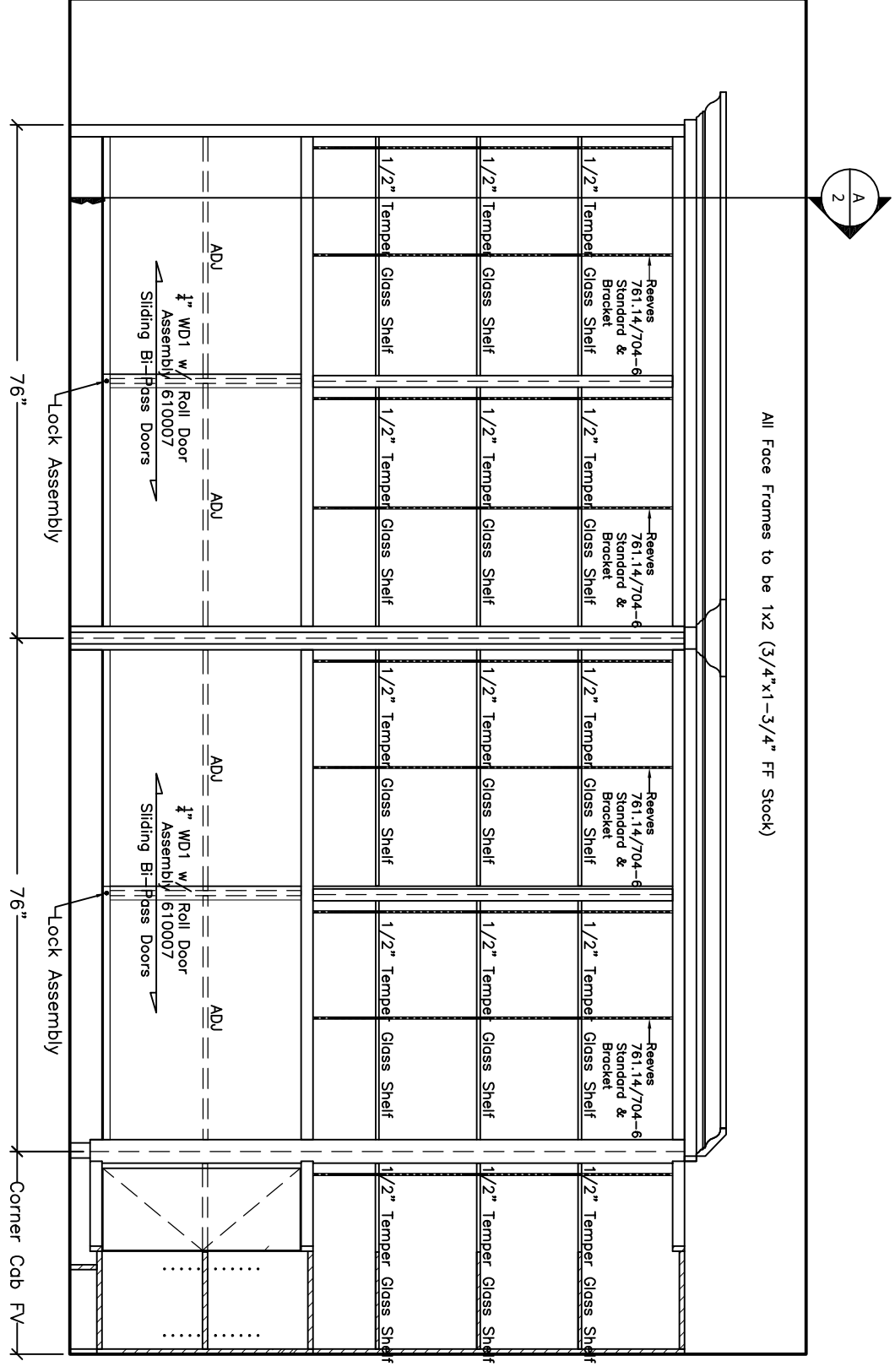
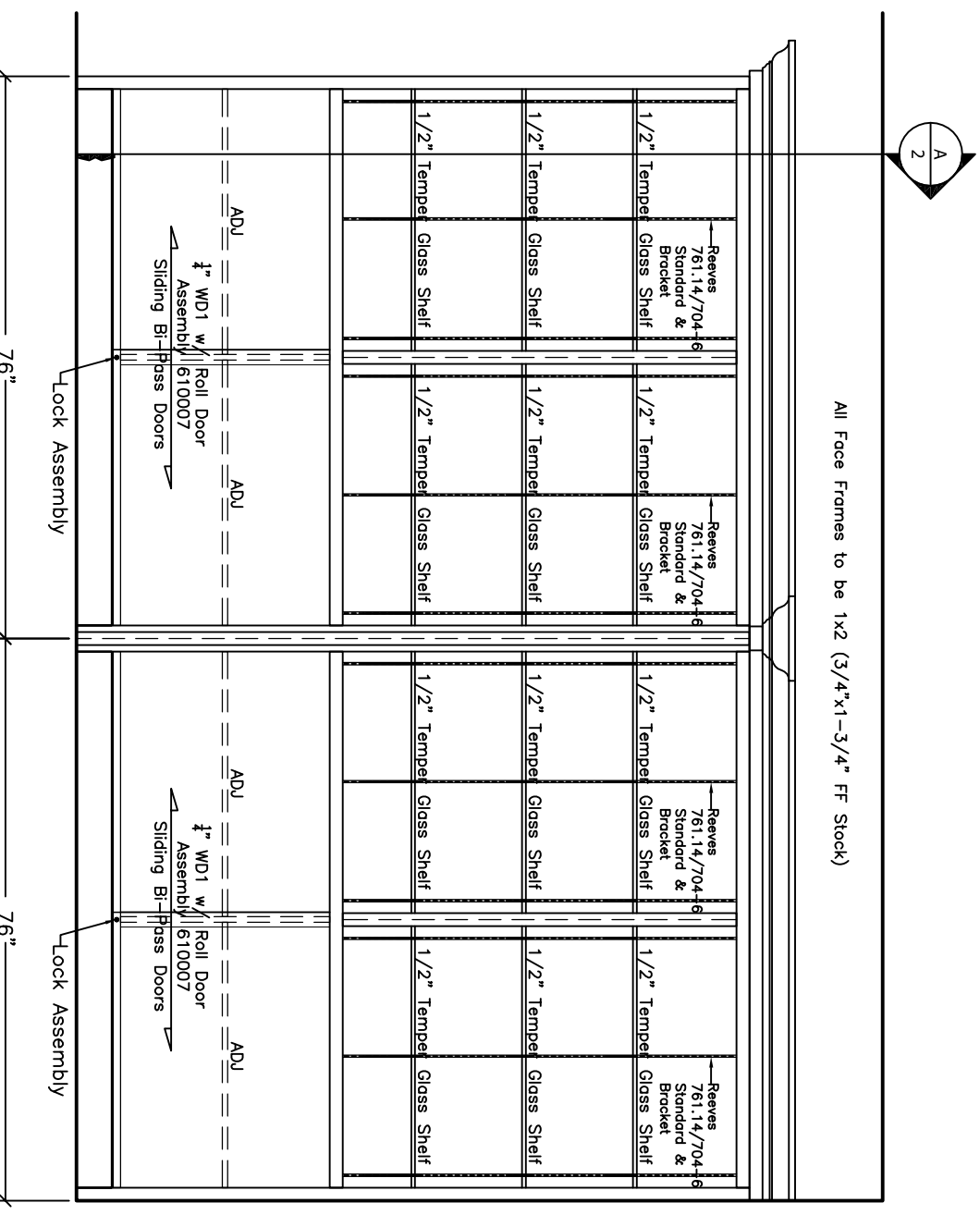
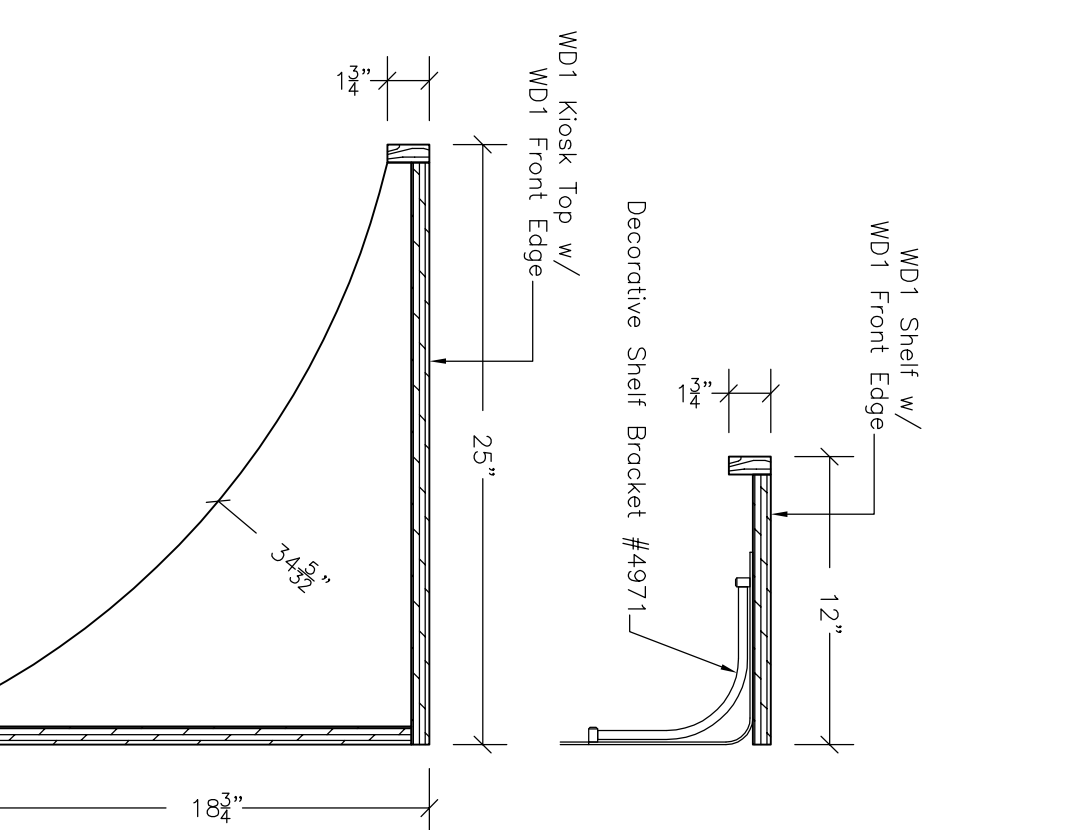
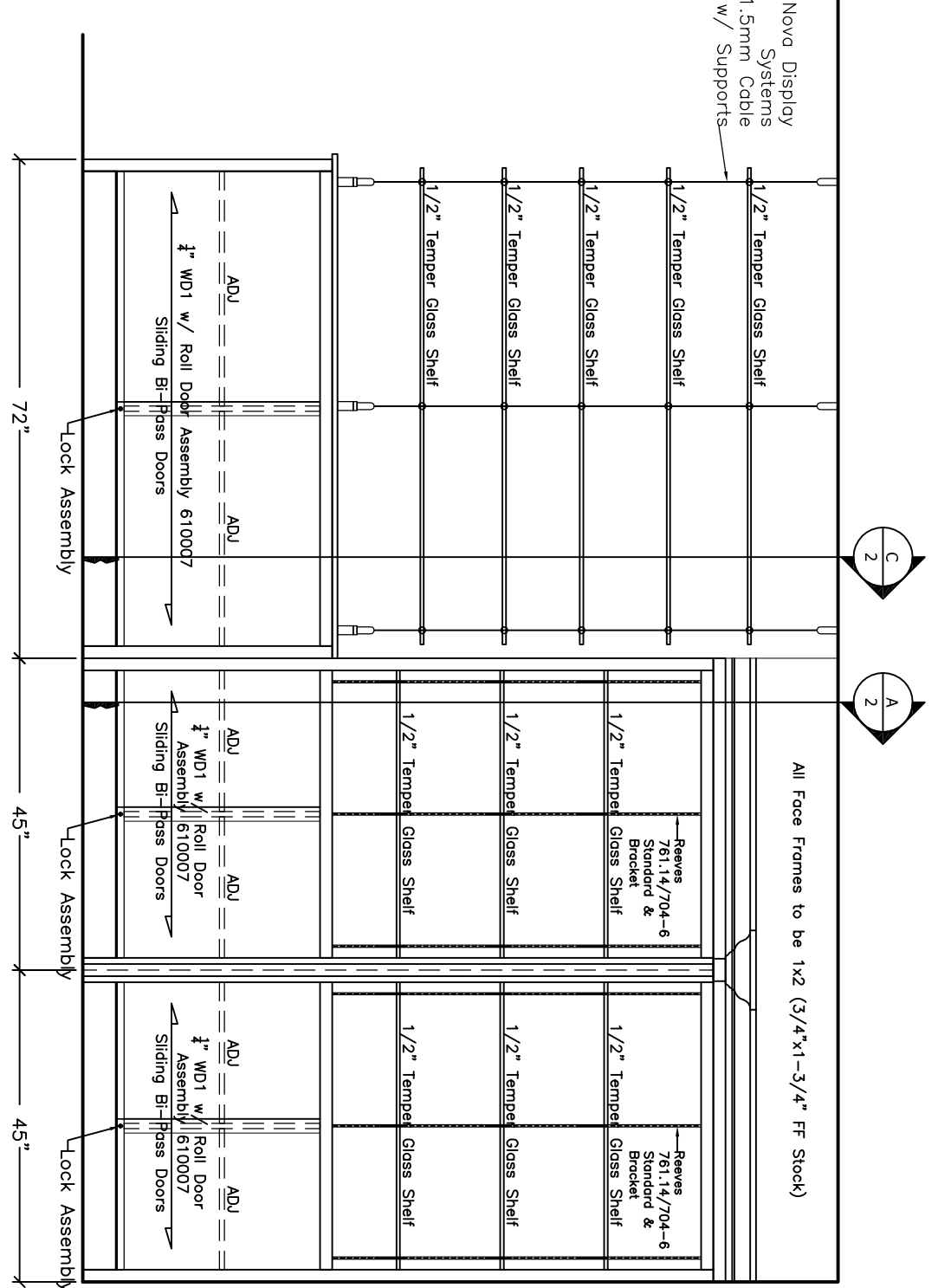
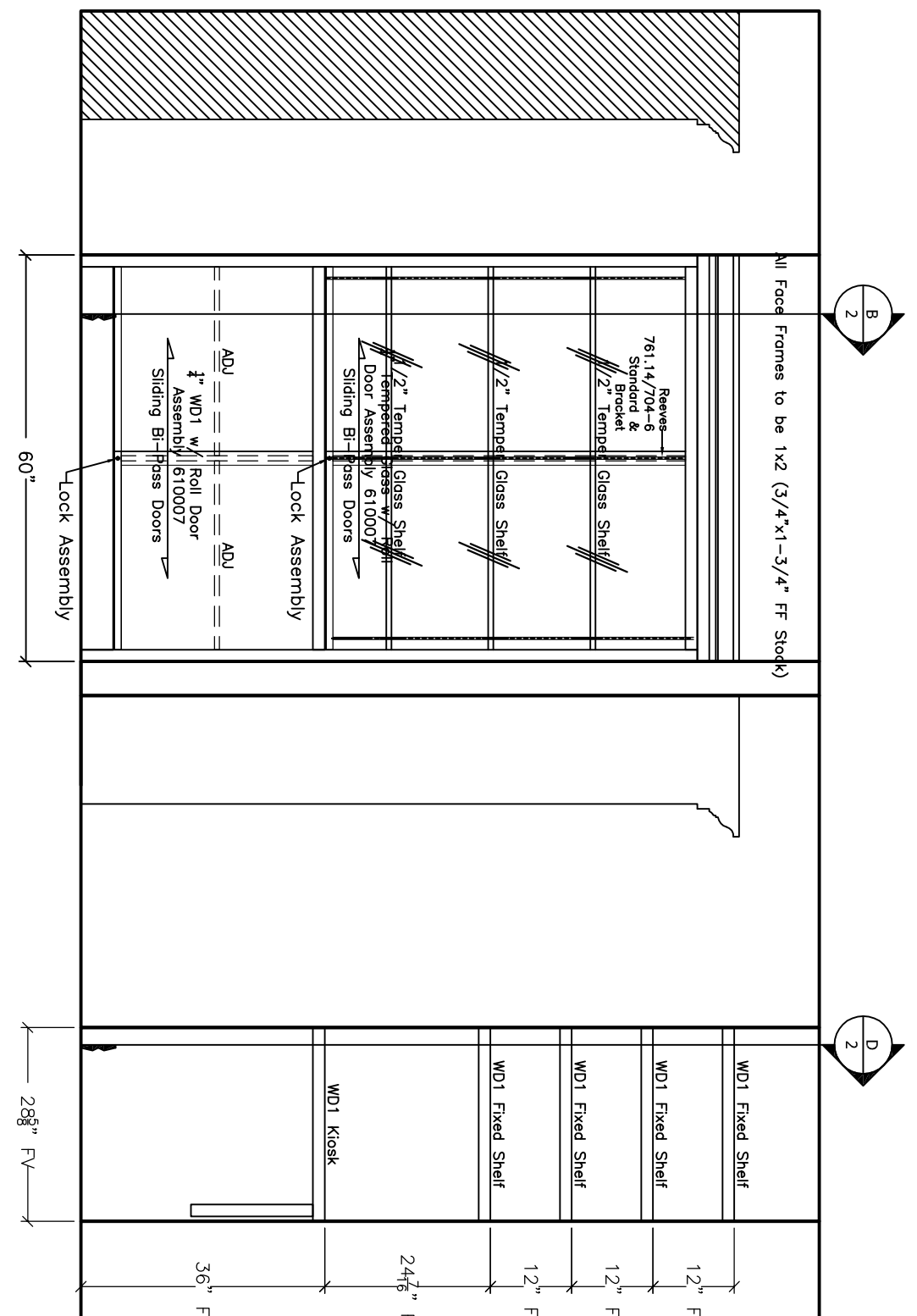
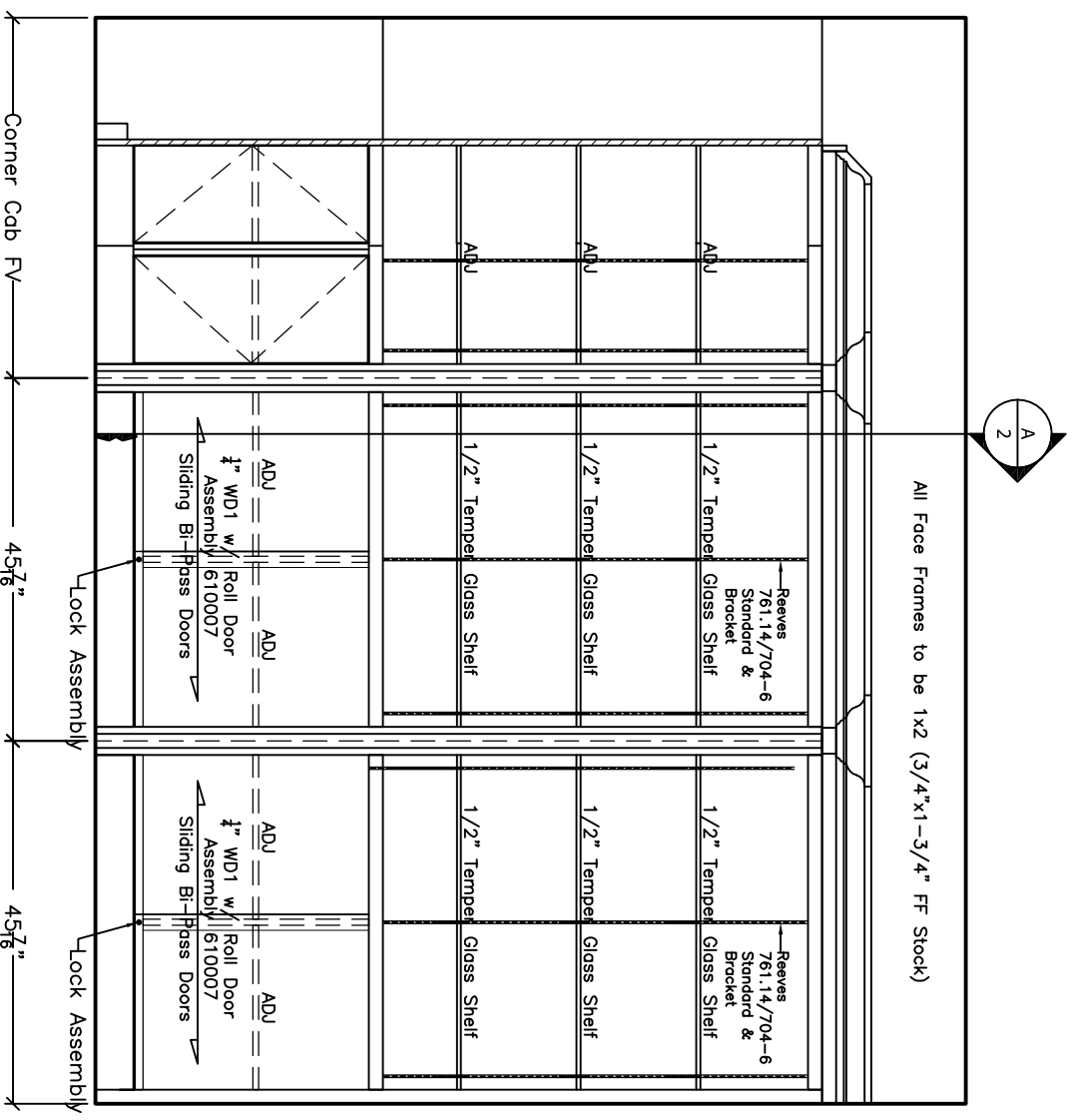
DATE DRAWN: 04-13-2011	REVISION:
DRAWN & CHECKED BY: SD	PROJECT #: 11-509
PHASE:	SHEET # 1 OF



CONTRACTOR:  
Arcoon Construction  
543 West 10th Street  
Columbus, Ohio 43215  
PH # 614.298.0429  
FAX # 614.298.0430

ARCHITECT:  
Pontia Architecture  
1441 King Aven, Suite 103  
Columbus, Ohio 43212  
PH # 614.486.3500  
FAX # 614.486.4125





4	Museum 103										CW#
ITEM	COUNTER TOP	CABINET TOPS	CABINET STYLE	HW-280/Mod	HARDWARE	HANGES & ROLLS	FINISH	WD1	WD1	WD1	WD1
SURFACE	TOP	EDGE	SPASH	EXTERIOR	INTERIOR	SHELVES	DOOR	EDGE	FRAMER	BOX	TOE
FINISH	WD1	WD1	V/A	WD1	WD1/AM	WD1/AM	WD1	V/A	V/A	Ply	Neutral Arm

4	Museum 103										CW#
ITEM	COUNTER TOP	CABINET TOPS	CABINET STYLE	HW-280/Mod	HARDWARE	HANGES & ROLLS	FINISH	WD1	WD1	WD1	WD1
SURFACE	TOP	EDGE	SPASH	EXTERIOR	INTERIOR	SHELVES	DOOR	EDGE	FRAMER	BOX	TOE
FINISH	WD1	WD1	V/A	WD1	WD1/AM	WD1/AM	WD1	V/A	V/A	Ply	Neutral Arm

**A** Museum Section View  
SCALE : 1 1/2" = 1' - 0"

**B** Museum Section View  
SCALE : 1 1/2" = 1' - 0"

**C** Museum Section View  
SCALE : 1 1/2" = 1' - 0"

DATE DRAWN: 04-13-2011  
DRAWN & CHECKED BY: SD  
PROJECT #: 11-509  
SHEET # 1 OF

CONTRACTOR:  
**Arcoon Construction**  
543 West Robt Street  
Columbus, Ohio 43215  
PH # 614.298.0429  
FAX # 614.298.0430

ARCHITECT:  
**Pontia Architecture**  
1441 King Aven, Suite 103  
Columbus, Ohio 43212  
PH # 614.466.3500  
FAX # 614.466.4125

AWI ARCHITECTURAL WOODWORK INSTITUTE

ITEM / VIEW DESCRIPTION: APPROVAL STAMP HERE: Z:\QCPolr.JPG

OHCP PROJECT #

**Ohio Pharmacist Association**  
2674 Federated Blvd, Columbus, Oh  
CITY AND STATE

Plan, Elev and Spec

GRADE REQUIREMENTS PLAM CABINETS CUSTOM PREMIUM  
GRADE REQUIREMENTS WOOD CABINETS CUSTOM PREMIUM